

**APA**

**September 21, 2006**

# Outline

- **District 11 Region**
- **Border Region**
- **Current 2002 Imperial County Transportation Plan**
- **Projects**
- **Reassessing Priorities**
- **Transportation Studies**
- **Challenges**





# Caltrans District 11



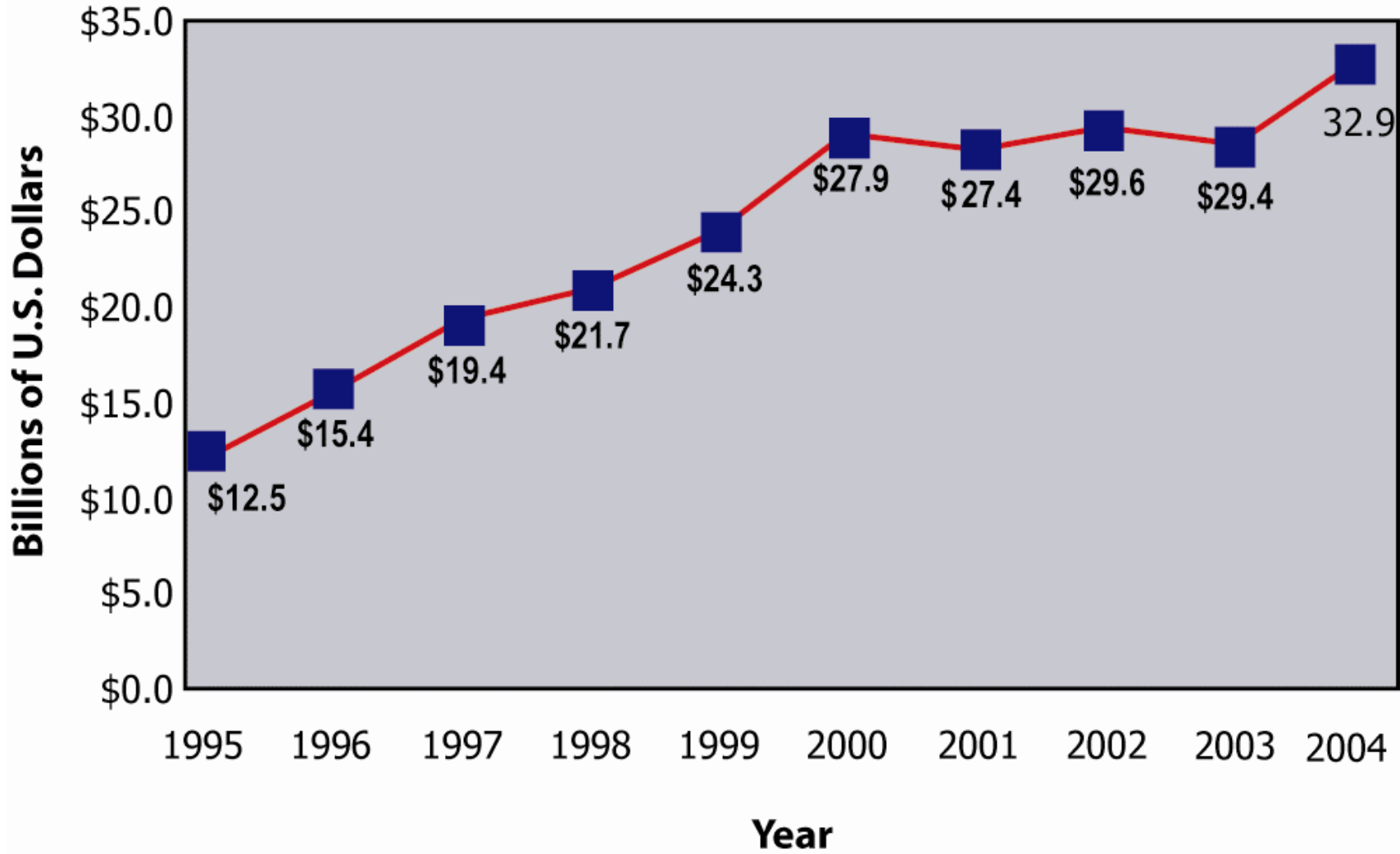
# Caltrans Planning Division

- **Regional Planning/Goods Movement/  
Border Planning**
- **System Planning**
- **Development Review**
- **Modeling/Travel Forecasting/GIS**
- **Grant Administration/  
Public Transportation**





### California Trade with Mexico by Truck





# California/Mexico Distribution of Trucks

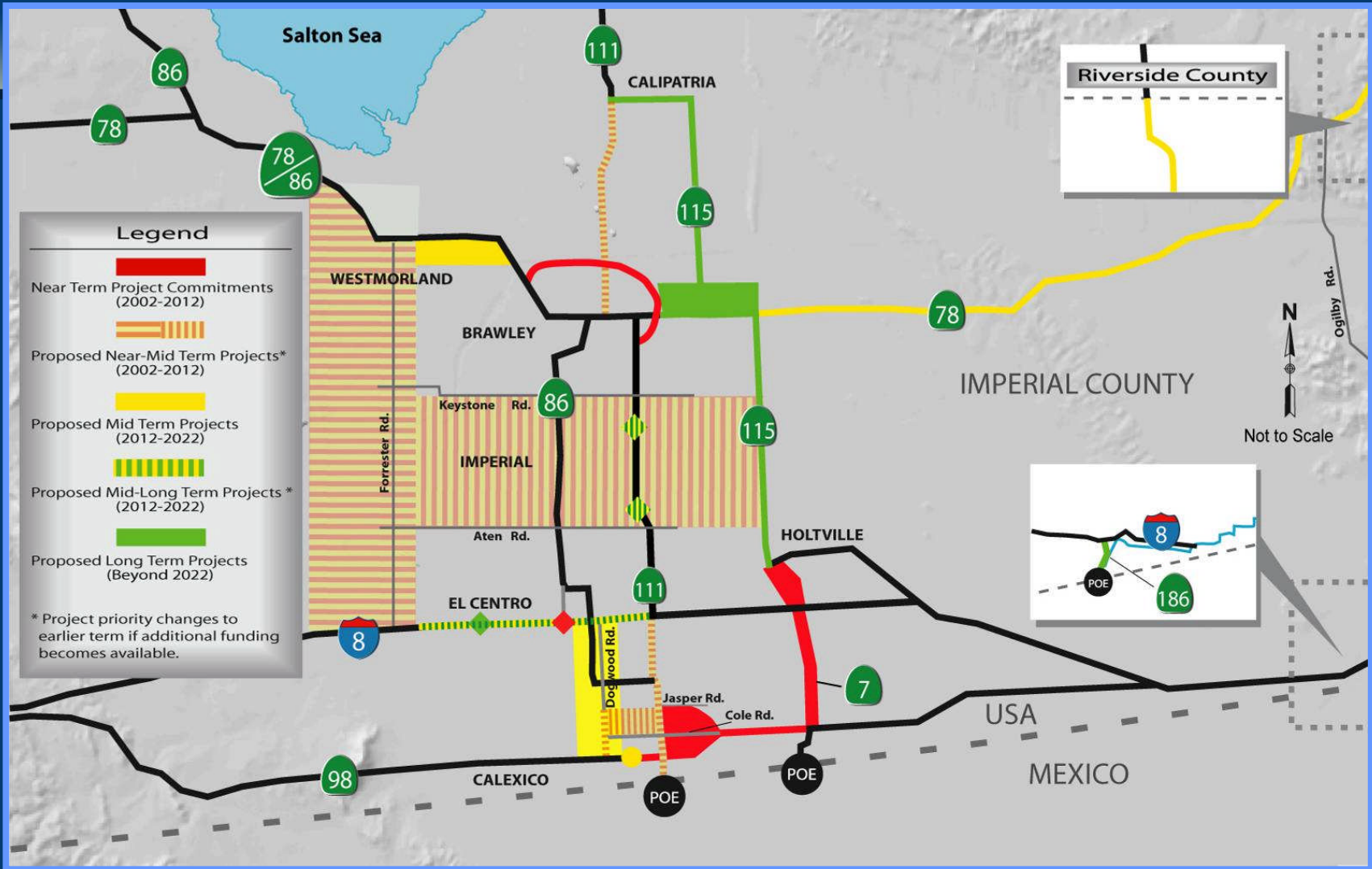




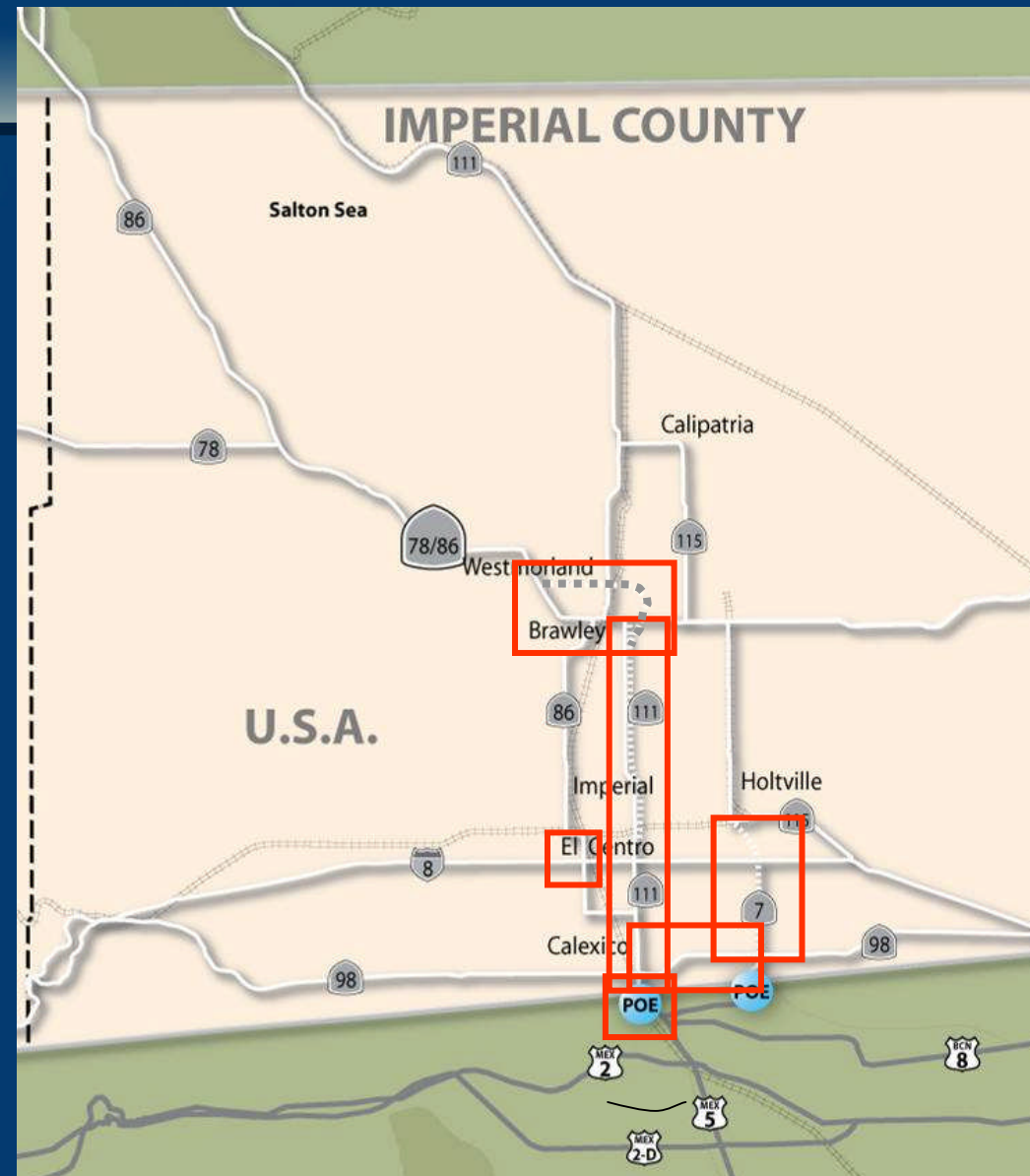
# 2002 Imperial County 20 Year Transportation Plan

- **NAFTA / NET**
- **Goods Movement Orientation**
- **North/South Truck Route**

# Imperial County 20 Year Plan



# Projects



- SR-7
- SR-111
- Brawley Bypass
- SR-98
- Imperial Avenue
- Calexico POE



# State Route 7

## The Project

- Extended the four-lane divided highway 5.5 miles from SR-98 to I-8 in Imperial County
- First segment: completed in March 1996 and stretched a little more than a mile from the California/Baja California border to SR-98
- Second segment: Preferred alignment followed Orchard Road



## Cost and Schedule

This NAFTA Net project, was recently completed and is open to traffic



# State Route 111

## The Project

- Project includes constructing a four-lane divided expressway on new alignment in Imperial County, from Ross Road near El Centro to Mead Road near Brawley
- Includes relinquishing existing SR-111, a two-lane conventional highway, to the County of Imperial as a frontage road

## Cost and Schedule

- This NAFTA Net project was recently completed and is open to traffic

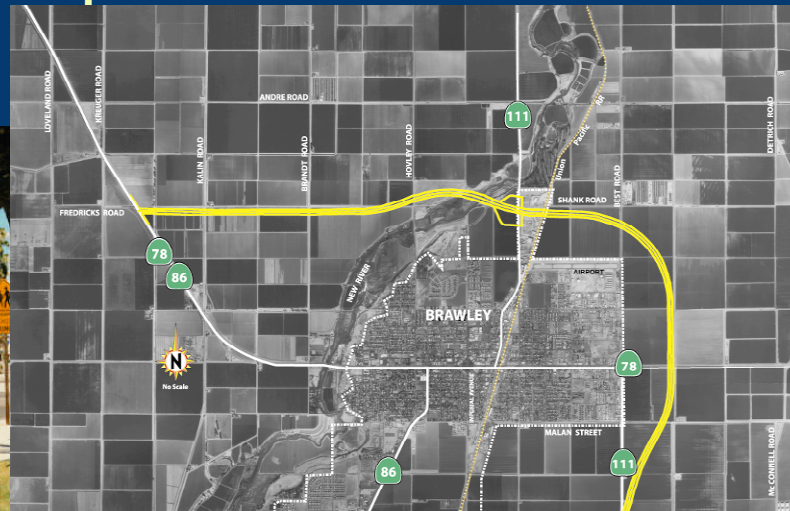




# Brawley Bypass

## The Project

- Construction of a four-lane divided expressway from SR-86 to 1.5 miles south of the eastern junction of SR-111 and SR-78
- Bridges at the New River and Southern Pacific Railroad crossings, a grade separated interchange at SR-111/SR-86, signalized and unsignalized intersections, and accommodations for future expansion of the Brawley Airport



## Cost and Schedule

The cost for stages two and three is estimated at:

- \$156 million with \$66 million programmed
- \$47 million proposed programming from the region
- \$51 million in bond funds in the Strategic Growth Plan





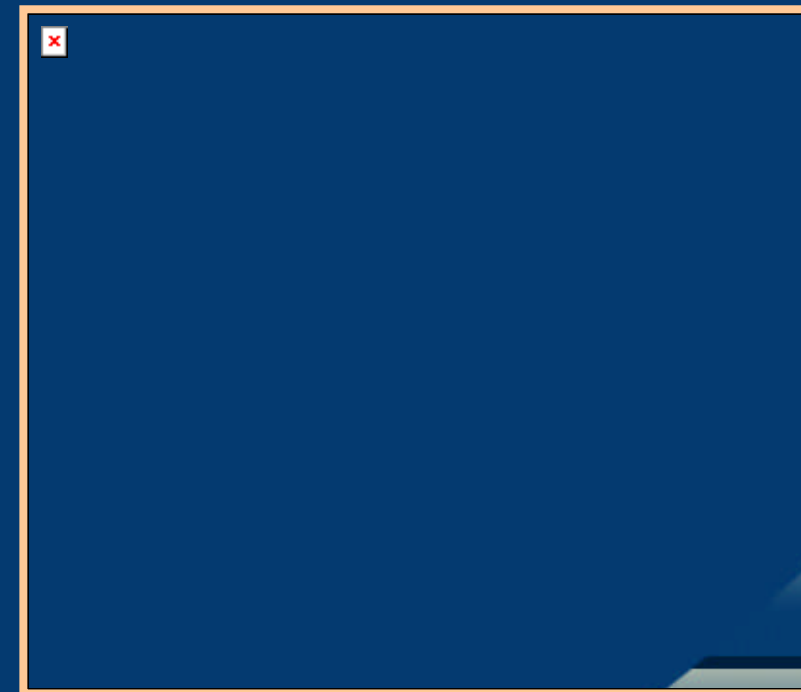
# State Route - 98 (West Project)

## The Project

- Widen approximately one mile of SR-98 from two-lanes to four-lanes in the City of Calexico from Dogwood to SR-111
- NAFTA Net Project

## Cost and Schedule

- The schedule for completion of the project is contingent on the availability of funding
- Construction to take approximately 18 months
- Cost is \$19.3 million
- 2.0 programmed plus a 2.4 M earmark
- \$14.9 million funding shortfall



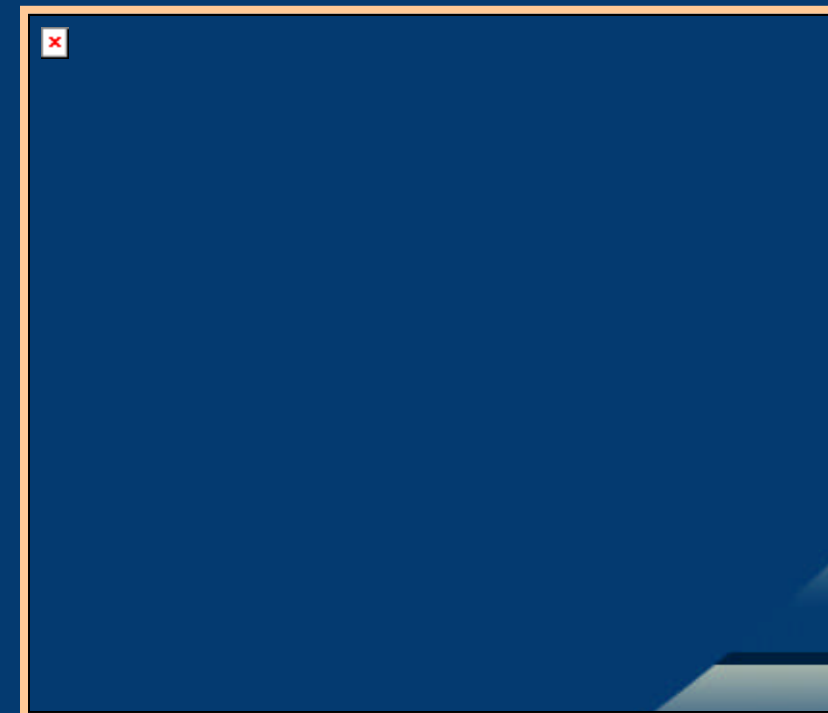
# State Route - 98 (East Project)

## The Project

- Realign and widening the facility to four/six lanes from SR-111 to SR-7
- Team hired to update the traffic and develop geometric requirements
- City is working with developers along the corridor to identify future alignment
- NAFTA Net Project

## Cost and Schedule

- Four years to complete environmental phase and design & right-of-way acquisition activities
- Will take the following two years to construct the project
- Cost is \$64 million
- Additional \$49 million is needed



# Imperial Ave. Interchange



## The Project

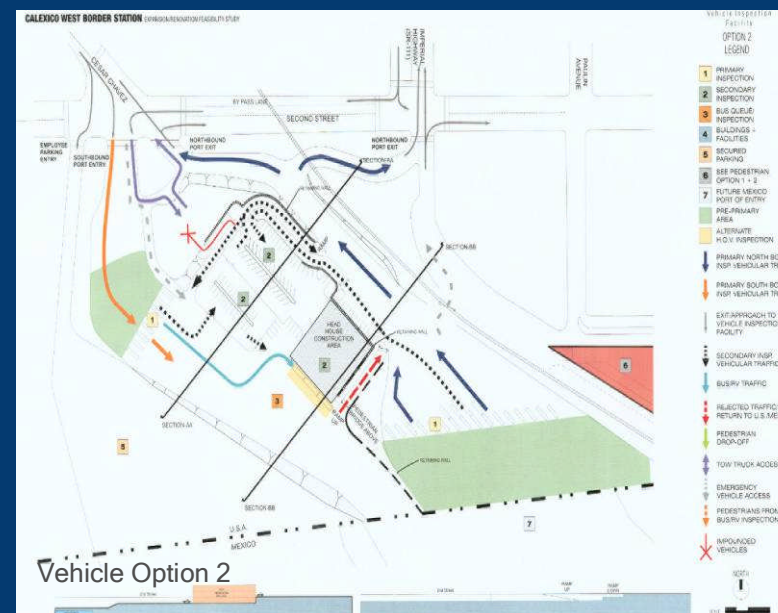
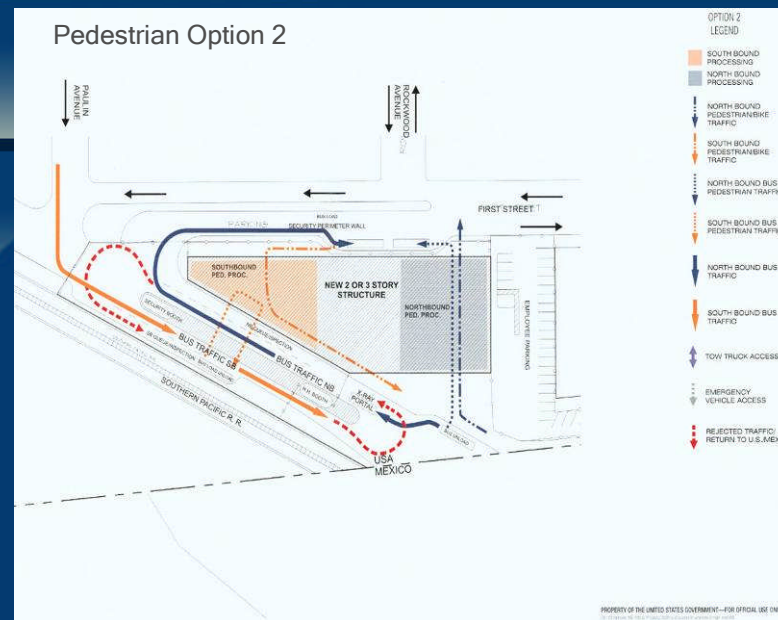
- Reconstruct interchange at I-8 and Imperial Avenue in El Centro
- Install two ramps to provide direct access to the southern sections of Imperial Avenue from I-8

## Cost and Schedule

- \$39.2 million
- Shortfall of \$34.3 million



# Calexico POE



- Calexico West Border Station Expansion/Renovation Feasibility Study
- Potential for capacity enhancement
- Realignment of traffic to access POE and accommodate cross border movement



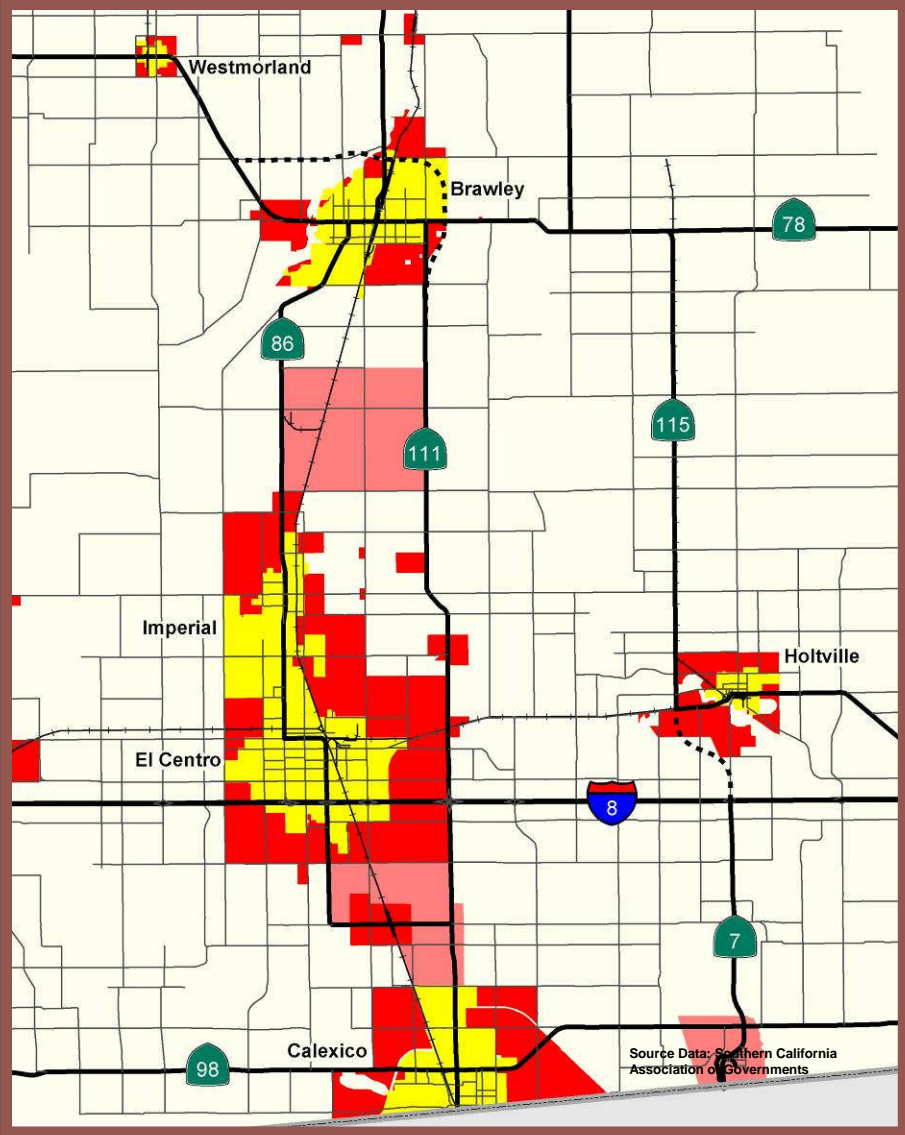
# Reassessing Priorities

- **20 Year Imperial County Transportation Plan Update**
- **Development Issues**
- **Employment Changes**
- **Goods Movement Increases**



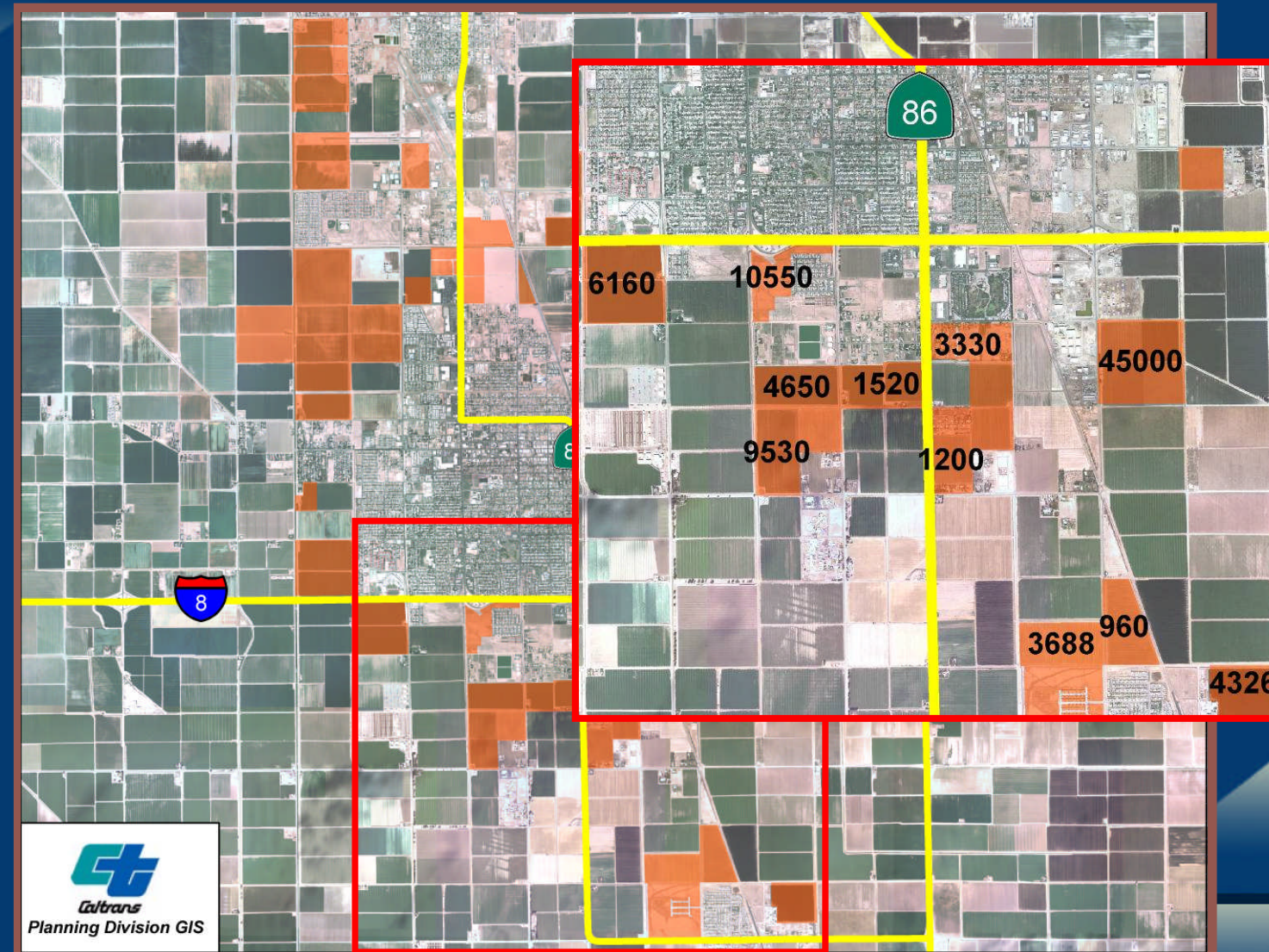
# Future Growth Areas - Imperial County

-  Urban Areas
-  Future Urban Areas
-  Specific Plan Areas



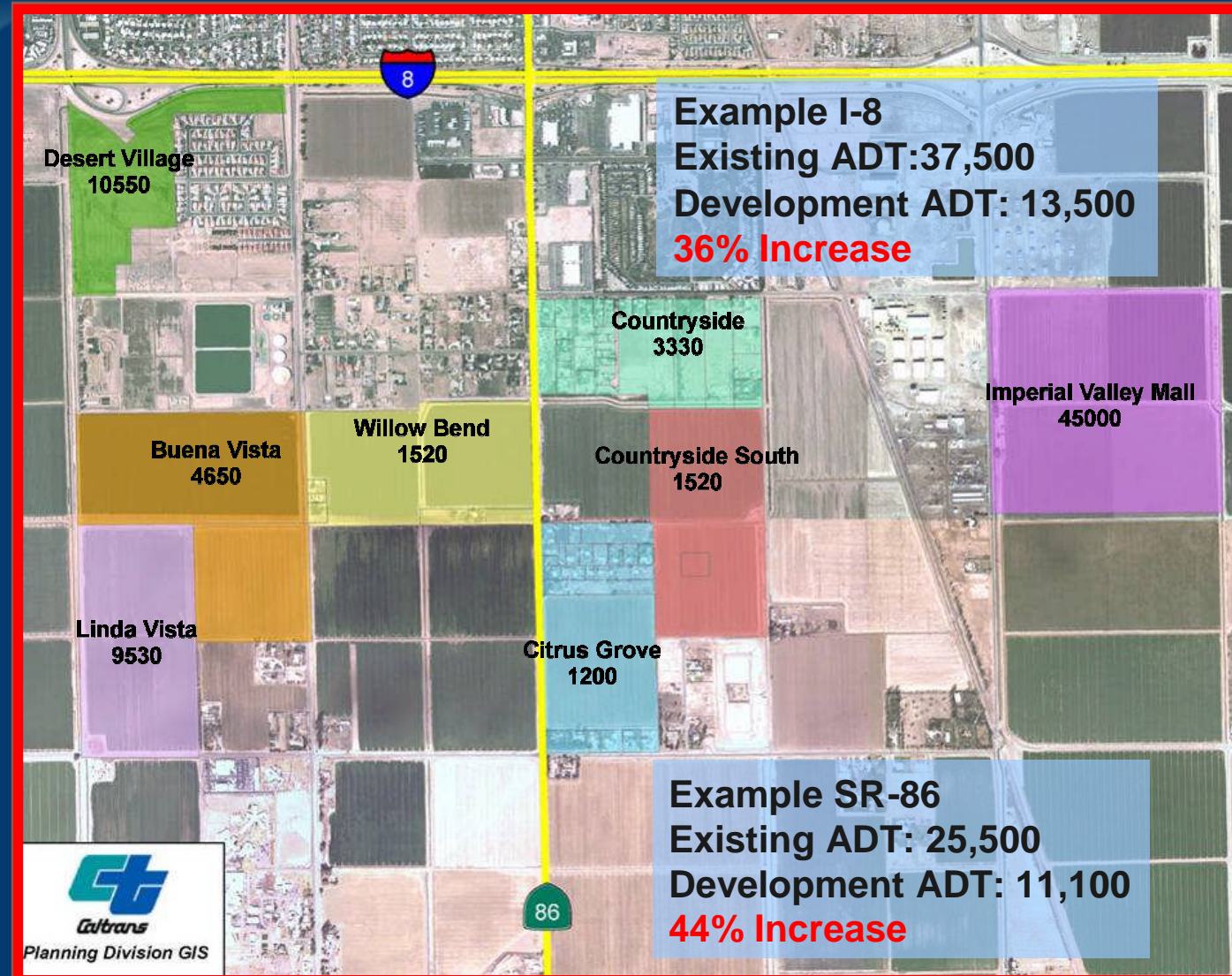


# Future Development

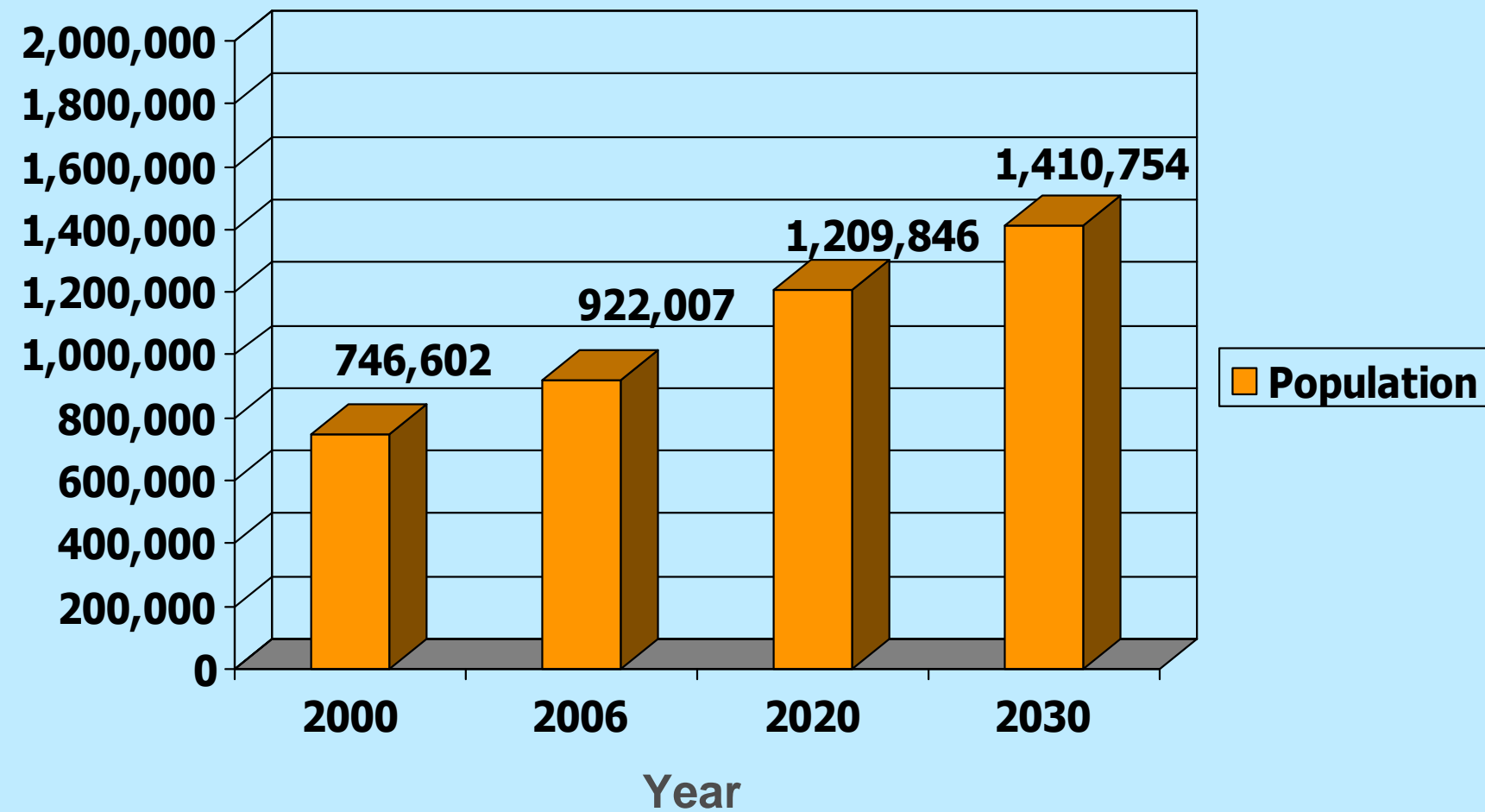




# Future Development Impacts



# Future Growth - Mexicali



\* 2000-2006 Data: BC Government Website

2020-2030 Data: Conapo Website

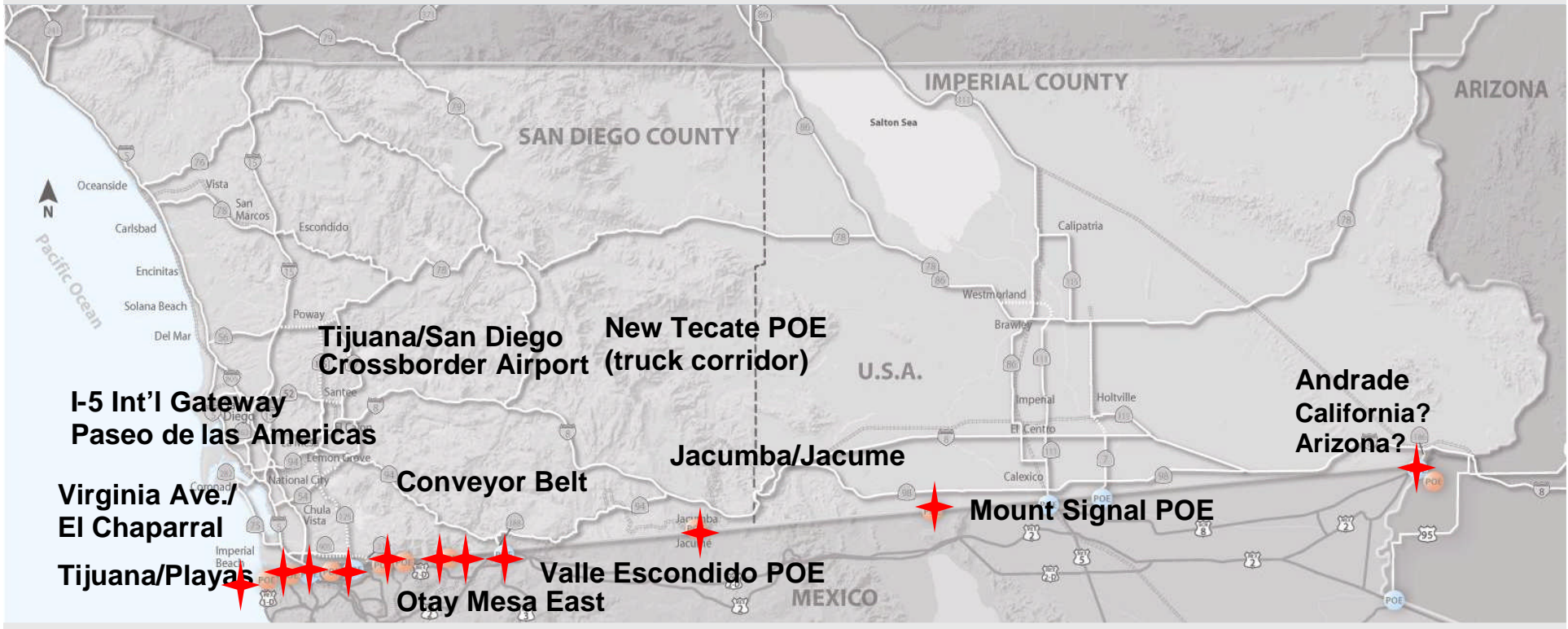


# Studies Underway/Upcoming

- **20 Year Imperial County Long Range Plan Update**
- **Cross Border Economic Study**
- **Border Master Plan**
- **South Imperial Corridor Study**
- **SR-115**
- **I-8 Strategic Corridor Study**
- **SR-98 (Jasper Road) Corridor Study**



# Border Master Plan





# South Imperial Study



- IVAG study, in partnership with Caltrans
- Land use and transportation focus
- Will identify near and long term transportation network needs

## Cost

- \$150 k

## Schedule

- February 2005 to September 2006





# State Route - 115



## The Project

- Construct a four-lane facility from I-8 to the existing west junction of SR-115 and Evan Hewes Highway

## Cost and Schedule

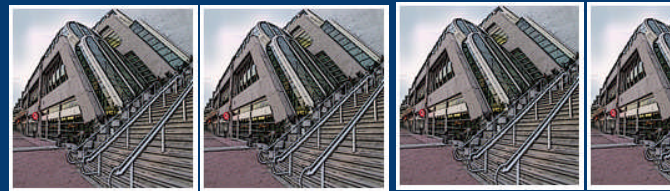
- \$56-76 million
- Funding for this project has not been identified
- Construction will require three years to complete



# Lost Economic Benefits San Diego-Baja California Personal Travel and Freight Movements

**\$4.2 Billion in Lost Output =**

3 1/2 San Diego  
Convention  
Centers



---

**42,200 Lost Jobs =**

8-9 Qualcomm  
Companies



# Challenges/Funding

## Sources

### Traditional

- STIP
- Sales Tax
- Local

### New

- SAFETEA-LU
- Strategic Growth Plan
- Innovative Financing
  - Developer Impact Fees (TIF)
  - Public/Private Partnerships



# Statewide Infrastructure Bond Measures

- **2006 State transportation Improvement Program (STIP)**
  - \$5.18 billion in transportation funding over FY2006/07 through FY 2010/11
  - Approved in April 2006
- **Proposition 42 Repayment**
  - \$920 million towards FY 2004/05 loan to General Fund
  - Prop 42 fully funded at \$1.4 billion level



# Statewide Infrastructure Bond Measures

- **Proposition 1A - Proposition 42 Protection (SCA -7)**
- **Proposition 1B - Transportation, Air Quality and Port Security Bond (SB 1266)**
- **Proposition 1C - Housing and Emergency Shelter (SB 1689)**
- **Proposition 1D - K-12/University Facilities (AB 127)**
- **Proposition 1A - Flood Prevention (AB 140)**



**Total - \$37 billion**



## Proposition 1B (SB 1266)

- **\$4.5 billion for Corridor Mobility Improvement**
- **\$3.2 billion for CA Ports Infrastructure, Security and Air Quality**
- **\$1.5 billion for STIP Augmentation (SD Share \$109 million)**
- **\$4 billion for Transit Modernization and Improvements**





## Proposition 1B (SB 1266) cont'd

- \$1 billion in State-Local Partnership program
- \$2 billion for Local Street and Road Improvements, Congestion Relief and Traffic Safety (SD share \$83 million)
- \$ 1 billion for Transit Safety, Security and Disaster Response
  - \$1.325 billion for other programs
  - \$1 billion for SR-99 improvements



# Maintaining Partnerships

- **Caltrans**
- **Local Agencies**
- **IVAG**
- **SCAG**
- **City of Mexicali**

